

P O L A



Pola In-Office
tooth colour
restoration system



Composite



Equipment



SDI

P
O
L
A

Talk to your patient about a whitening programme that's right for them.



At Home Treatments

Pola Day

6% hydrogen peroxide	1 or 2 × 30 minute applications or 1 × 45 minute application per day
----------------------	---

Pola Night

Note: 1% of hydrogen peroxide equates to 2.77% of carbamide peroxide

10% carbamide peroxide	1 × 2 hours to overnight
16% carbamide peroxide	90 minutes per day to overnight

Pola for Aligners

10% carbamide peroxide	1 × 2 hours to overnight
------------------------	--------------------------

Pola Light

6% hydrogen peroxide	2 × 10 or 2 × 15 minute treatments per day
----------------------	--

On The Go

Pola Luminate

6% hydrogen peroxide	2 × 30 minute applications per day
----------------------	------------------------------------

A close-up portrait of a woman with long, wavy blonde hair and light blue eyes. She is wearing a dark blue, long-sleeved dress with a fine, sparkling texture. Her right hand is resting under her chin, and she is wearing a wide, multi-strand diamond bracelet on her right wrist. She is also wearing large, ornate diamond earrings. The background is a solid dark blue. The text 'At Home' is overlaid in a large, white, sans-serif font across the center of the image.

At Home

Treatments



Pola Day

Pola Night





Fluoride releasing

Pola Day and Pola Night both contain fluoride, which helps strengthen the tooth to protect it against sensitivity.

Safe and convenient

Pola Day and Pola Night's unique high water content formulation has a neutral pH to protect gums and teeth during treatment.

Effective whitening

The desired whitening effect can be achieved in as little as 30 minutes per day or can be conveniently applied overnight while you sleep. There are a variety of different strengths of Pola Day and Pola Night that patients can use at home.

Pola Desensitising Technology (PDT)

Pola Day and Pola Night contains potassium nitrate and Fluoride to assist with the prevention of post treatment sensitivity. Both Pola Day and Pola Night contain 20% water which prevents dehydration and helps reduce or eliminate sensitivity.

What's the difference between Pola Day and Pola Night?

Pola Day consists of a range of hydrogen peroxide based take home gels specifically designed for achieving whitening results for patients with limited time in their schedule.

Pola Night contains carbamide peroxide for slow release of active oxygen.

Hydrogen peroxide formula means faster release of active ions which in turn means less tray wear time.

Pola Night is a range of carbamide peroxide based take home gels that deliver optimum whitening results to patients who have more sensitive teeth. Pola Night converts into hydrogen peroxide plus urea, which means there is a slower release of ions and hence more suited to overnight treatment.

Both ranges are available in a variety of different strengths with the lower concentrations geared towards more sensitive teeth.

Pola For Aligners

Straighten and brighten together

Pola whitening gel for aligners is perfectly formulated for use with orthodontic aligner trays.

Pola For Aligners can easily be used as a take home kit, ensuring a great patient experience by providing whiter, brighter smiles with no additional wear time.

Pola For Aligners combines the same benefits of the award-winning Pola whitening formula

- The greatest patient comfort in a whitening kit
- Contains potassium nitrate and fluoride to reduce sensitivity for long term use
- High viscosity gel ensures it can be easily and securely placed into the aligner tray, staying in place

**Available in a convenient 4 syringe kit
– for take home, day or overnight wear**

- The Pola For Aligners system is available in Pola Night 10% carbamide peroxide gel that has been carefully selected as the ideal whitening agent to suit any aligner system. It enables patients to customise use between meals for just a couple of hours a day, to the convenience of overnight wear
- Clinical research has identified 10% carbamide peroxide as the Gold standard in tooth whitening, providing optimal whitening results whilst maintaining maximum patient safety and comfort*



SAFE FOR OVERNIGHT WEAR



EASY TO USE



FLUORIDE RELEASING



PROFESSIONALLY USED AND RECOMMENDED



Pola Light

New advanced take home tooth whitening system with LED light technology

Enjoy a brighter, more confident smile in 5 days.

Pola Light is an advanced tooth whitening system that combines Pola's award-winning whitening formula, with an LED mouthpiece, for a faster whitening treatment.

- The Pola Light system combines with Pola Day.
- Fast acting, delivering whiter teeth in as little as 5 days.
- Formulated to safely remove long term stains.
- Fully rechargeable for future tooth whitening treatments.
- Remineralisation to strengthen the teeth.



Scan QR code for step by step instructions.



FROM JUST 20 MINUTES A DAY

2 x 10 or 2 x 15 minute treatments per day.



EASY TO USE

Portable, rechargeable and easy to wear with no cord attached to mouthpiece. Pola LED mouthpiece is a dual arch and a universal size.



WHITER TEETH IN FIVE DAYS

5 day treatment time. No chair time or custom trays required, saving time for both patient and dentist.



PROFESSIONALLY USED AND RECOMMENDED

Pola is a professional tooth whitening system that is trusted and recommended by dentists to achieve a safer, quicker and whiter smile. The high viscosity, neutral pH tooth whitening gels ensure the greatest patient comfort in a take home kit.

The unique blend of soothers, conditioners and high water content assist in reducing sensitivity.



Pola Luminare



Recharge the brightness with Pola Luminare! With 6% hydrogen peroxide, Pola Luminare is our highest strength brush on tooth whitener. It is designed to easily fit into your patient's pocket or bag to be used on the go! This is a great touch up tool to maintain an already white smile.



POLA LIGHT
ADVANCED TOOTH WHITENING SYSTEM

POLA LIGHT
ADVANCED TOOTH WHITENING SYSTEM



POLA RAPID

SDI

P
O
L
A

LA RAPID
TOOTH WHITENING SYSTEM

SDI

P
O
L
A

POLA DAY
ADVANCED TOOTH
WHITENING SYSTEM

SDI





CLINICAL CASE STUDIES



Dr Vijay Vadher
UK

Pola Night 16%



Dr Linda Greenwall
UK

Pola Night 10% CP for Aligners



Dr. David Carralero Plaza
Spain

Pola Day 6%



**Dr. Mohamed
Abdulmonem Abdulsalam**
Egypt

Pola Light 6%



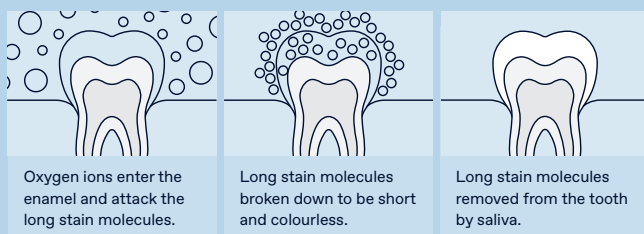
F A Q

What causes tooth discolouration?

Everyone's teeth are unique, therefore they discolour and stain in different ways. The discolouration or staining of a tooth is typically caused by strong coloured foods and liquids such as coffee, curry or from smoking cigarettes.

How does tooth whitening work?

When a whitening product is applied to the tooth, it breaks down into water and oxygen ions. The oxygen ions enter the enamel and attack the long stain molecules to effectively break them down to be short and colourless. These short and colourless molecules are then naturally removed from the tooth by saliva. The intensity of whitening is related to the number of ions available and the length of time they are on the tooth.



How long does it take to whiten a patient's teeth?

With In Clinic whitening, results may be obtained in just 30 minutes treatment time. Using a take home whitening system may take approximately 5-14 days.

How long will the whitening treatment last?

Tooth whitening is an irreversible dental procedure and the time frame in which the treatment will last is dependent on the individual person and their oral habits. Tooth whitening can be repeated from 6-12 months for both in-office and take home procedures.

How does whitening affect restorations and veneers?

Whitening will remove any existing stains on the restorations and veneers, but will not affect the original shade.

Are there any side effects?

Please consult the instructions for use. The vast majority of people will experience no side effects. However, some will experience temporary sensitivity (dull or sharp, sensitivity too hot or cold). This will subside after several hours and won't leave any residual problems. The wear times can be shortened or made less frequent. The patient should abstain from carbonated drinks, citrus fruits and beverages to avoid sensitivity.

Is tooth whitening safe during pregnancy?

It is not recommended to use tooth whitening products during pregnancy.

Pola At Home

Please note: each pack includes accessories.
CP: Carbamide Peroxide HP: Hydrogen Peroxide

POLA DAY	
Pola Day Mini Kit 4 × 1.3g (6% HP)	7700357
Pola Day 10 × 1.3g Syringe Kit (6% HP)	7700359
Pola Day 50 × 1.3g Bulk Kit (6% HP)	7700361
Pola Day 50 × 3g Dispenser Kit (6% HP)	7700079

POLA FOR ALIGNERS	
Pola For Aligners 4 × 3g Pola Night Syringes (10% CP)	7700556

POLA LIGHT	
Pola Light 4 × 3g Pola Day Syringes (6% HP)	7700985

POLA LIGHT DISPLAY STAND	
1 x Stand	7700979

POLA NIGHT	
Pola Night Mini Kit 4 × 1.3g (10% CP) (16% CP)	7700369 7700375
Pola Night 10 × 1.3g Syringe Kit (10% CP) (16% CP)	7700371 7700377
Pola Night 50 × 1.3g Bulk Kit (10% CP) (16% CP)	7700373 7700379
Pola Night 50 × 3g Dispenser Kit (16% CP)	7700085

TRAY CASES	
Tray Cases 5 Pack 5 x Tray Cases	7750008

TRAY MATERIAL	
20 Tray Material 20 Pieces	7750005

SPACER RESIN	
2 Syringe Kit 2 × 1g Spacer Resin Syringes	7700012

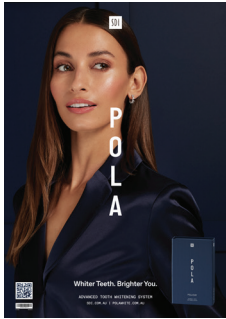
GINGIVAL BARRIER	
Gingival Barrier 2 Syringe Refill 2 × 1g Gingival Barrier Syringes Accessories	7750006

Pola On The Go

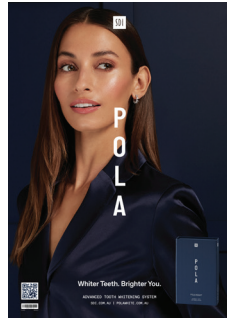
POLA LUMINATE	
Pola Luminate 1 × 5.5mL	7700092

Complimentary marketing material

Marketing material to assist in promoting whitening to patients.



Poster Pola Day
Reorder M110050



Poster Pola Night
Reorder M110051



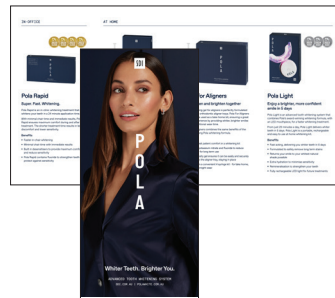
Pola Before & After Stand
Reorder M110057



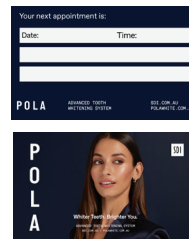
Pola Patient Handout Stand
Reorder M110059



Pola Light Patient Handout
Reorder M101058



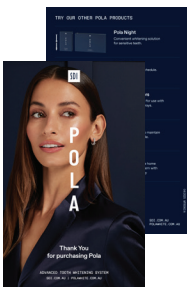
Pola Patient Handout
Reorder M101055



Pola Appointment Card
Reorder M110056



Pola Window Sticker
Reorder M110058



Pola Thank You Card
Reorder M110063



Pola Statement Stuffer
Reorder M110060



Pola Carry Bag
Reorder M100331



Pola Carry Bag
Reorder M100332



Pola Waiting Room USB Video
Reorder M100245



Customisable Marketing Material
More customisable marketing material is available via download. Visit www.sdi.com.au

MEDICAL DEVICES

IN-OFFICE
TOOTH COLOUR
RESTORATION
SYSTEM

Pola Office+

Pola Office+ is used for medically indicated restoration of discoloured teeth that cannot be restored through existing take home systems.

Includes a brush tip for easy application



Pola Office+ is recommended when tooth discolouration negatively impacts the patient's health-related quality of life.

Pola Office+ provides a less invasive option compared to fillings, crowns, or veneers, and should be considered the first choice.

Minimal chair time is required

Treatment time is a maximum of 32 minutes (4 × 8 minutes). This will depend on the level and nature of staining of individual patients.

No light required

Pola Office+ can be used with² or without a light, as it does not require activation.

²External bleaching therapy with activation by heat, light or laser—A systematic review. Wolfgang Buchalla, Thomas Attin. Dental Materials 23 (2007) 586–596

Contains potassium nitrate

No separate desensitiser is required. Pola Office+ has unique built-in desensitising properties. Potassium nitrate, the keypain-reducing ingredient¹, penetrates the nerve endings by blocking transmission of sensitive nerve impulses.

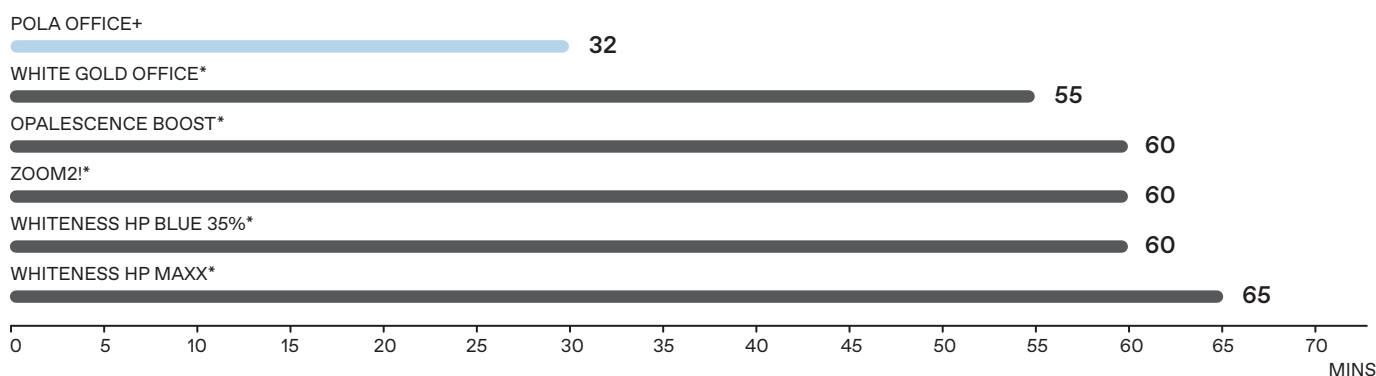
Simple delivery

No mixing is required. The dual barrel syringe system mixes as you apply the gel directly to the tooth. This ensures a consistent blend of freshly activated gel. The freshly activated gel maximises the restoration effect. The fine applicator tip allows easy application, especially in tight spots.

Just one thin layer

A thin layer of gel is all that is required. Use the tip to spread the gel ensuring all tooth surfaces are covered.

ESTIMATED TREATMENT TIME[‡]



¹Wang et Al. Journal of Dentistry, Volume 43, Issue 8, August 2015, Pages 913-923

[‡]Published and SDI Test Data.

* Not the registered trademarks of SDI Limited.

CLINICAL CASE STUDIES USING POLA OFFICE+ ON TETRACYCLINE STAINED TEETH.



José Amengual Lorenzo
Associate Professor :
University of Valencia, Spain



Marta Peydro Herrero
Former Associate Professor :
University of Valencia, Spain



Ana Roig Vanaclocha
Associate Professor :
University of Valencia, Spain



Rubén Agustín Panadero
Associate Professor :
University of Valencia, Spain



Pola Tooth Colour Restoration System

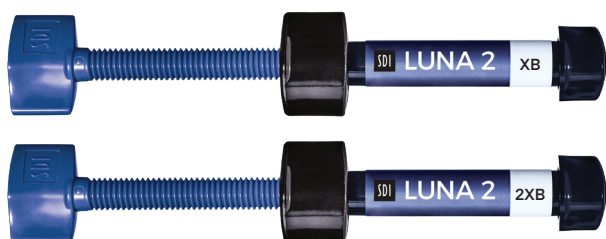
POLA OFFICE+	
Pola Office+ 37.5% 1 Syringe Kit 1 × 2.8 mL syringe of Pola Office+	7700464
Pola Office+ 37.5% 3 Syringe Kit 3 × 2.8 mL syringes of Pola Office+	7700461

POLA WHITENING STAND	
1 x Stand 1 x mount for SDI Radii Plus 1 x mount for SDI Radii Xpert Accessories	7700989

Luna 2 Universal Composite



Luna 2 is the next generation Luna universal composite. Luna 2 has an improved blend of fillers that were researched and developed at SDI to deliver enhanced handling, very high radiopacity and reliable mechanical properties. Luna 2 is BPA free for health-conscious patients.



BLEACH SHADES

LUNA 2 SYRINGE 4g REFILLS

Shade: XB (equivalent to OM2 Vita®)	8452021
Shade: 2XB (equivalent to OM1 Vita®)	8452022

LUNA 2 COMPLET REFILLS (0.25g x 20 refills; 5g total)

Shade: XB (equivalent to OM2 Vita®)	8452071
Shade: 2XB (equivalent to OM1 Vita®)	8452072

Radii Xpert Multiwave

- Broad spectrum multiwave tip
- Optimally collimated beam
- Smart technology for ease of use
- Ergonomically well-balanced grip
- Consistent light intensity



RADII XPERT LED CURING LIGHT

Radii Xpert LED curing light	5600312
- 1 x Multiwave LED attachment	
- 1 x Radii Xpert handpiece	
- 1 x charger	
- 1 x multi-region plug pack	
- 5 x small light shields	
- 1 x large light shield	
- 3 x spare lens caps	
- 100 x barrier sleeves	

Pola Whitening Stand

- Simple design
- Wide range of movements and adjustments
- Versatile
- Equipped with wheels
- Lightweight, cordless and compact



POLA WHITENING STAND

1 x Stand	7700989
1 x Mount for SDI Radii Plus	
1 x Mount for SDI Radii Xpert	
Accessories	



Scan QR code for step by step instructions.

SDI

SDI Limited is primarily involved in the research and development, manufacturing and marketing of specialist dental materials. SDI's products are a combination of innovation and excellence to provide the ideal restorative materials for the dental profession.

MADE IN AUSTRALIA

by SDI Limited
3-15 Brunsdon Street,
Bayswater, Victoria 3153
Australia
www.sdi.com.au

AUSTRALIA 1 800 337 003
AUSTRIA 00800 022 55 734
BRAZIL 0800 770 1735
FRANCE 00800 022 55 734
GERMANY 0800 100 5759
ITALY 00800 022 55 734
NEW ZEALAND 0800 808 855
SPAIN 00800 022 55 734
UK 00800 022 55 734
USA & CANADA 1 800 228 5166



INSTAGRAM
[@pola_smile](https://www.instagram.com/pola_smile)



FACEBOOK
[polasmiletoothwhitening](https://www.facebook.com/polasmiletoothwhitening)

For more information visit
polawhite.com.au



11-2025

M100140 C